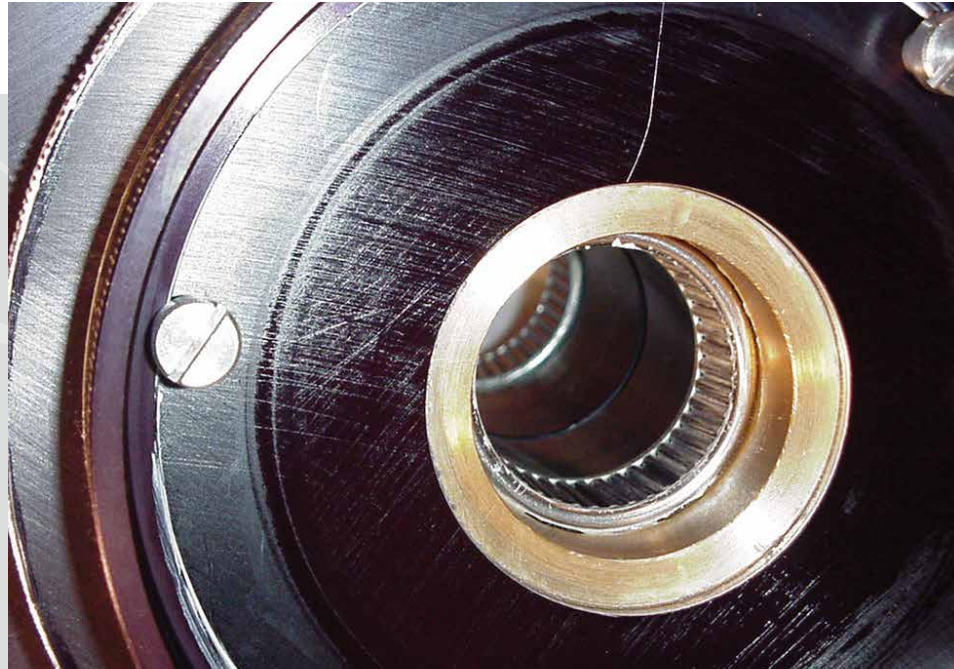




ZetaLube

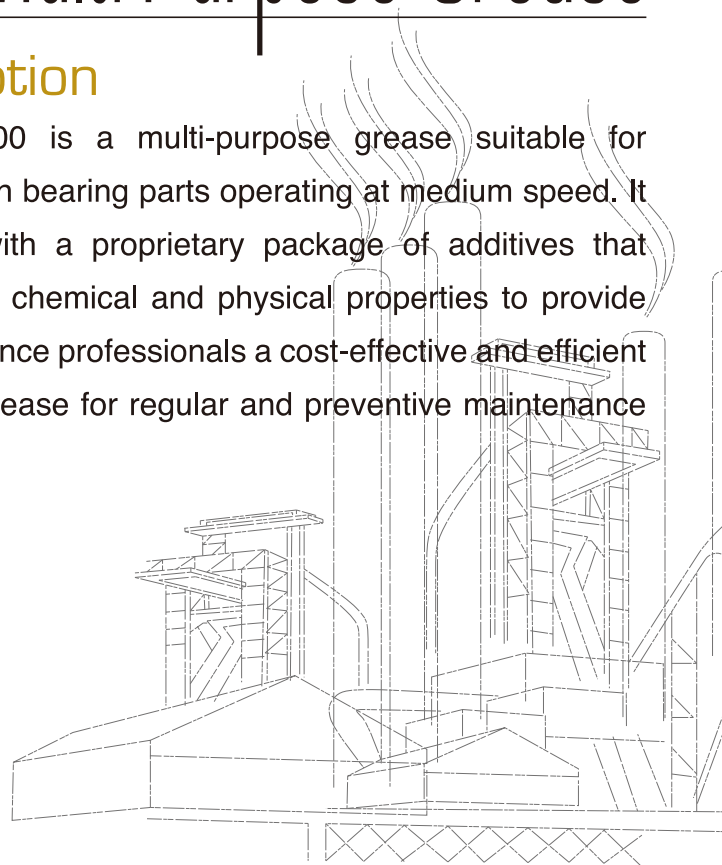
A New Lubricity Dimension
Evolved From Experience



ZetaLube 200 Multi-Purpose Grease

Description

ZetaLube 200 is a multi-purpose grease suitable for application on bearing parts operating at medium speed. It is fortified with a proprietary package of additives that enhances its chemical and physical properties to provide the maintenance professionals a cost-effective and efficient lubricating grease for regular and preventive maintenance jobs.



www.magnagroup.com

ITW PPFK reserves the right to modify or change this product for purpose of improving its performance characteristics ©2016 ITW PP & F Korea Limited.

The ZetaLube Trade Mark is the property of ITW Inc., and is used under licence by ITW PP & F Korea Limited



Features and Benefits

- Excellent oxidation and thermal stability to protect against carbon residues build-up and heat stress.
- Good adhesiveness to prevent fling-off of the grease from parts/components.
- Can be used on machinery/equipment parts and components such as bearings where lubricating oil is not desirable.
- Excellent film strength to provide protection against metal-to-metal wear and moisture.
- Good protection against corrosion and water wash-off.
- Versatile applications – reduce inventory of lubricants.
- Extends machinery/equipment service life and reduces maintenance costs.

Recommended Applications

- Suitable for use in automotive and industrial machinery/equipment operating at medium speed where EP grease is not required.
- Particularly suitable for use in electrical motor and wheel bearings carrying moderate loads.

Typical Data

TEST	ASTM TEST METHOD	TEST RESULT
Colour	Visual	Dark Yellow
Texture		Smooth
Type of Thickener		Lithium Complex
NLGI Grade		2
Worked Penetration @25°C	D-217	275 typ.
Viscosity in cSt of Base Fluid	@40°C	190
	@100°C	18.1
Viscosity index for Base Fluid	D-2270	97
Flash Point for Base Fluid (°C)	D-92	290
Pour Point for Base Fluid (°C)	D-97	-9
Dropping Point (°C)	D-2265	260+
Operating Temperature Range (°C)		-20 to +175
Timken OK Load (Kg)	D-2509	23
4-Ball EP Performance Weld Load (Kgf)	D-2596	320
Water Washout % Loss	D-1264	7%

The data shown is typical value and may vary.

Pack-size

15 Kg Pail

Authorized Distributor